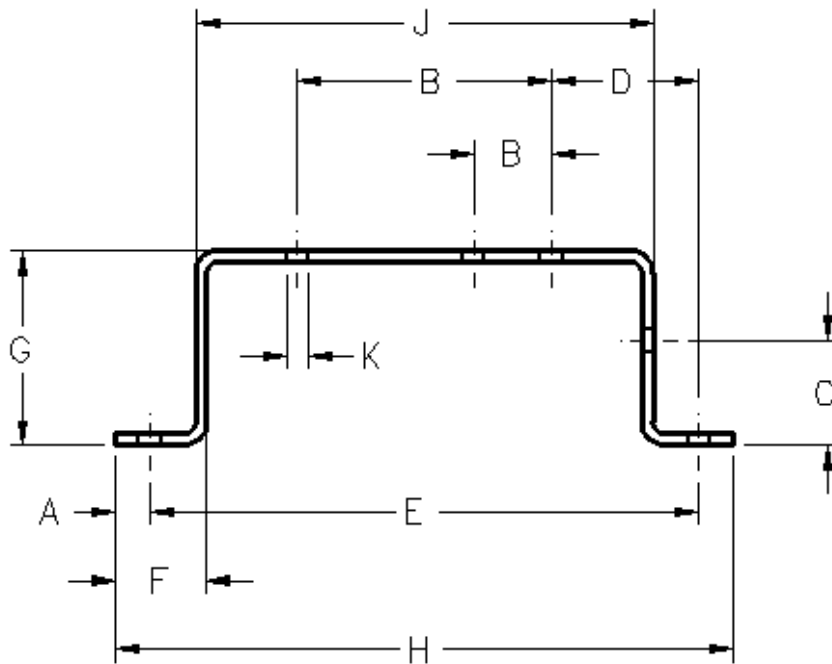




STAR GENERAL TOLERANCES FOR PRECISION SHEETMETAL The IGES/STEP/.SLDPRT file is the master document concerning all feature size and location. All noted tolerances on the hard copy print supersede standard dimensional charts.



DIM	Preferred Tolerance		Description
	< .118 Thick	> .118 Thick	
A	±.015	±.020	Sheared Edge to Hole
B	±.010	±.010	2 Holes on One Surface
C	±.020	±.030	Formed Edge to Hole
D	±.020	±.030	Holes Across 2 Bends
E	±.030	±.030	Holes Across 4 Bends
F	±.015	±.030	Sheared Edge to Bend
G	±.015	±.030	Across 2 Bends
H	±.030	±.030	Formed Part (under 24")
J	±.020	±.030	Across 2 Bends
K	±.005	±.005	Feature Size